

480 Rated Voltage, 690 Max Voltage, High Z, Impedance.

Part Number	Horsepower (HP)	Motor Amps (A)	Maximum Amps (A)	Inductance (uH) +/-10%	Weight (LBS)	Losses (W)
KDRAA1H2E01	2	3.4	3.8	10800	13.4	33
KDRAA2H2E01	3	4.8	5.4	7650	13.4	42
KDRAA6H2E01	4	6.2	7.2	5930	13.8	50
KDRAA3H2E01	5	7.6	8.2	4840	14.1	66
KDRAA3H2E01	5 1/2	8.2	8.2	4840	14.1	74
KDRAA4H2E01	7 1/2	11	12	3060	14.4	70
KDRAA5H2E01	10	14	14	2330	14.6	97.7

208/ 240 Rated Voltage, 690 Max Voltage, High Z, Impedance.

Part Number	Horsepower (HP)	Motor Amps (A)	Maximum Amps (A)	Inductance (uH) +/-10%	Weight (LBS)	Losses (W)
KDRAA28H2E01	3	10.6	11	1618	13	44.6

600 Rated Voltage, 690 Max Voltage, High Z, Impedance.

Part Number	Horsepower (HP)	Motor Amps (A)	Maximum Amps (A)	Inductance (uH) +/-10%	Weight (LBS)	Losses (W)
KDRAA46H2E01	1 1/2	2.4	3.2	19100	13.6	26
KDRAA43H2E01	2	2.7	3.4	17000	13.4	30
KDRAA44H2E01	3	3.9	4.5	11800	13.3	47
KDRAA57H2E01	4	4.9	5.5	9380	13.9	48
KDRAA58H2E01	5	6.1	6.8	7530	13.8	44
KDRAA58H2E01	5 1/2	6.6	6.8	7530	13.8	47

480 Rated Voltage, 690 Max Voltage, Low Z, Impedance.

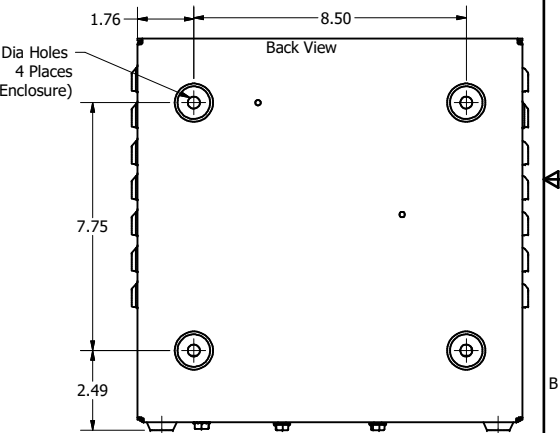
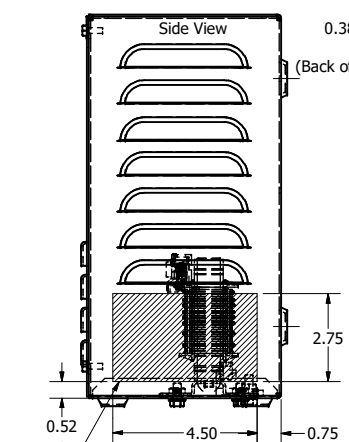
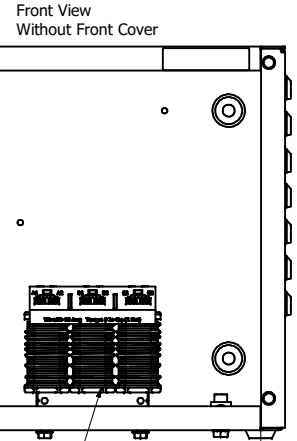
Part Number	Horsepower (HP)	Motor Amps (A)	Maximum Amps (A)	Inductance (uH) +/-10%	Weight (LBS)	Losses (W)
KDRAA6L2E01	4	6.2	7.0	3560	13.4	39
KDRAA3L2E01	5	7.6	8.2	2900	13.4	45
KDRAA3L2E01	5 1/2	8.2	8.2	2900	13.4	49
KDRAA4L2E01	7 1/2	11.0	11.6	2000	13.4	63
KDRAA5L2E01	10	14	14	1580	13.7	77.7

208/ 240 Rated Voltage, 690 Max Voltage, Low Z, Impedance.

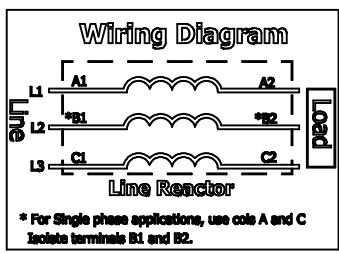
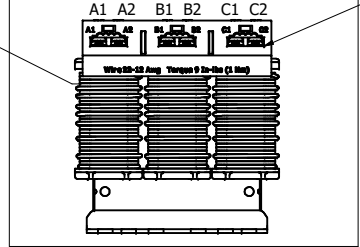
Part Number	Horsepower (HP)	Motor Amps (A)	Maximum Amps (A)	Inductance (uH) +/-10%	Weight (LBS)	Losses (W)
KDRAA28L2E01	3	10.6	12	971	13.4	42

600 Rated Voltage, 690 Max Voltage, Low Z, Impedance.

Part Number	Horsepower (HP)	Motor Amps (A)	Maximum Amps (A)	Inductance (uH) +/-10%	Weight (LBS)	Losses (W)
KDRAA52L2E01	3	3.9	4.5	7070	13.9	30
KDRAA57L2E01	4	4.9	5.5	5630	13.3	30
KDRAA58L2E01	5	6.1	7.6	4520	13.4	39
KDRAA58L2E01	5 1/2	6.6	7.6	4520	13.4	44
KDRAA48L2E01	7 1/2	9.0	9.6	3100	13.6	57
KDRAA49L2E01	10	11	11	2350	14.2	52.6



Wire Range: 22-12 AWG.
Torque : 9 In-lbs (1 Nm)



TCL | TCL, LLC | Germantown, WI | transcoll.com

KDR Drive Reactor
KDR — Motor Amps —
3PH 50/60Hz, —V Rated, 690V Max, —A Max, RoHS
50C Amp Max 138C Max, Manual # 30895

UL LISTED
100-0001, 100-0002

CE

Date Code

- Notes: 1. UL file number: cULus Listed File E116124.
2. KDR Drive Reactors Comply With The Thermal and Altitude Standards Set Forth by NEMA ST20-1992.
3. KDR IOM Manual Part Number 30895
4. NEC Current For 208/240 Volts, Horsepower Based On 208 Volts
5. Material(s) Shall be RoHS Compliant
6. User To Punch Own Holes For Wire Entry.
7. Customer Is Responsible For Installation To Meet All National And Local Electrical Codes.

NO	REVISION	DATE	BY	SCALE	DATE	BY	SCALE	TOLERANCES (EXCEPT AS NOTED)	DATE	BY	SCALE
G	6688, Various MAX AMP UPDATES	6/3/2024	DSW					DECIMAL			
F	6232, Remove KDRAA47L2E01							.XX ±.25 .XXX ±.10			
F	6232, Remove KDRAA9H2L2E01	4/6/2023	DSW					FRACTIONAL			
E	4912E01 Inductance changed	10/1/22	JSG					± 1/32			
D	5455, 9L, 9H, 1H, 46H, 43H, Weight updated	1/14/2021	DSW					ANGULAR			
NO	REVISION	DATE	BY	SCALE	DATE	BY	SCALE	± 1°			

TCL | W132N10611 (Trans 134) | Germantown, WI | 53022

An Official Motors Company

KDR AA Frame, Terminal Block, Enclosed

Type I, Inductor Drawing

DRN BY: DSW | DATE: 10/20/2017 | 107185DG

SCALE: 1/3 | SHEET: 1 OF 1